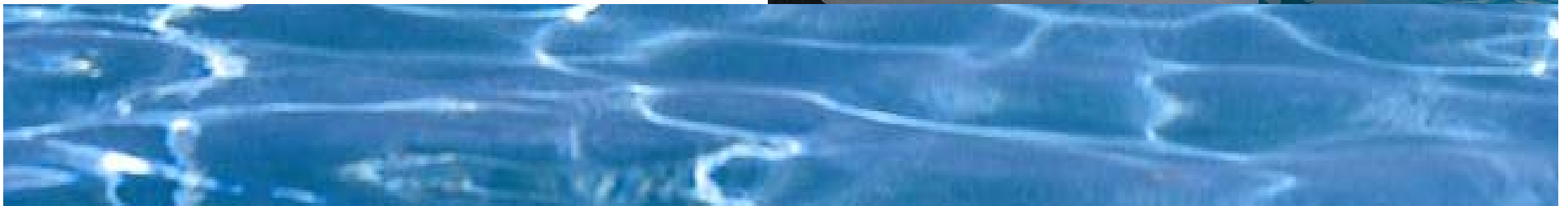




ALMYRA





MEETING FACILITIES

Athina Boardroom

Helios Meeting room

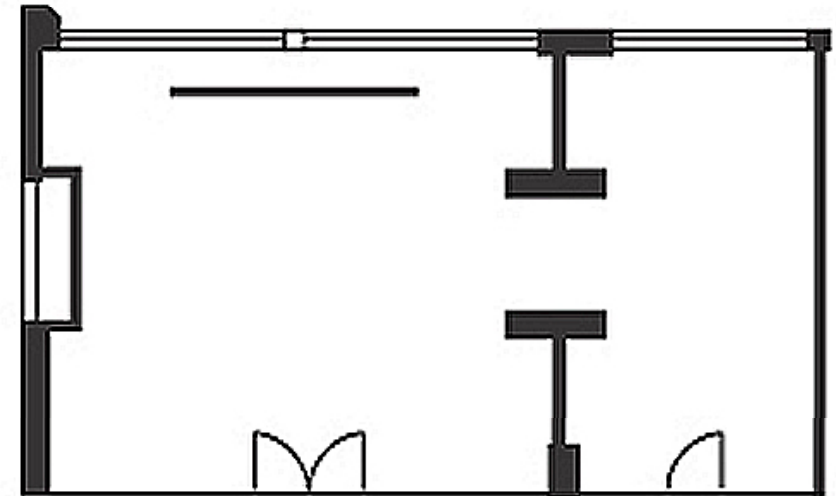
Danae Meeting Room

West Mosaics Multifunction Room



ATHINA BOARDROOM

Situated next to the entrance courtyard and bathed in natural sunlight, this is a private room that is ideal for special presentations, especially suited for syndicate purposes as it can be split into two rooms. Athina is conveniently located near the hotel lobby and its facilities



Dimensions and Capacities

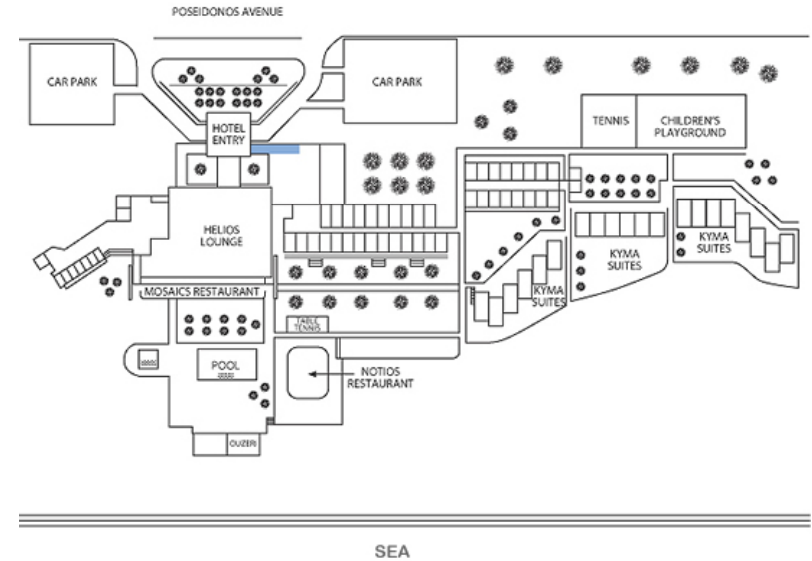
- Area: 29 Square metres
- Ceiling height: 3.30 metres
- Classroom Style: 12 delegates
- Theatre style: 20 delegates
- Boardroom style: 14 delegates

ALMYRA



ATHINA BOARDROOM

Situated next to the entrance courtyard and bathed in natural sunlight, this is a private room that is ideal for special presentations, especially suited for syndicate purposes as it can be split into two rooms. Athina is conveniently located near the hotel lobby and its facilities



Dimensions and Capacities

- Area: 29 Square metres
- Ceiling height: 3.30 metres
- Classroom Style: 12 delegates
- Theatre style: 20 delegates
- Boardroom style: 14 delegates

ALMYRA



HELIOS

Overlooking Paphos Medieval Castle and harbour, this room opens onto a private terrace, perfect for coffee breaks and sunset cocktail receptions. Located at the lobby level, Helios functions both as a meeting room and a private dining venue.

Dimensions:

Square metres: 50

Ceiling Height: 3.30 metres

Capacities (no. of persons):

Classroom Style: 25 delegates

Theatre Style: 40 delegates

U Shape: 14 delegates

Cocktail: 60 delegates

Banquet: 20 delegates

Boardroom: 16 delegates

ALMYRA



HELIOS TERRACE

Located on the lobby level and accessed via Helios meeting room or the Flavours area.

Break out area

Coffee break location



DANAE

Located at lobby level, this room is easily accessible from the Mosaic restaurant's main entrance and from the west staircase leading to the ground floor, pool and garden; it also has convenient access to Flavours at Helios and the Helios Bar, giving it both pre-dinner and banqueting capabilities. The room is naturally-lit with bathroom and cloakroom facilities close by.

Dimensions:

Length: 17.3 m

Width: 7.8 m

Square metres (total): 133 m²

Ceiling Height: 2.8 m - 3.8 m

Capacities (no. of people):

Classroom Style: 70

Theatre Style: 120

U-Shape: 60

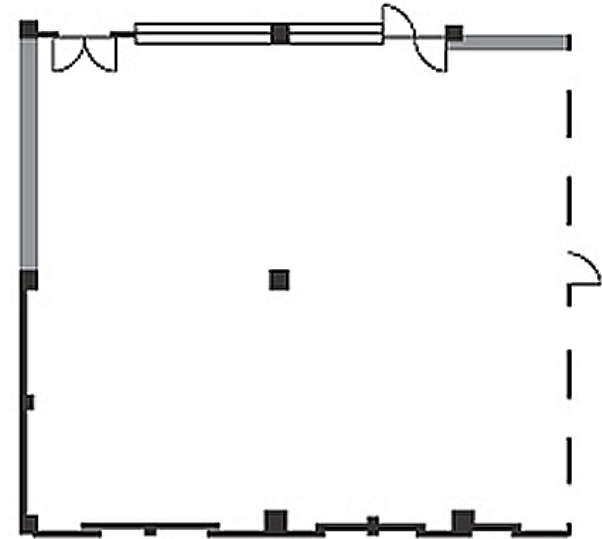
Cocktail: 120

ALMYRA



WEST MOSAICS

Located at the Pool level with views to the pool and the sea, this room is easily accessible from the Mosaics restaurant's main entrance or the west staircase leading to the ground floor, pool and garden. With pre-dinner, banquet, bathroom and cloakroom facilities.



Dimensions:

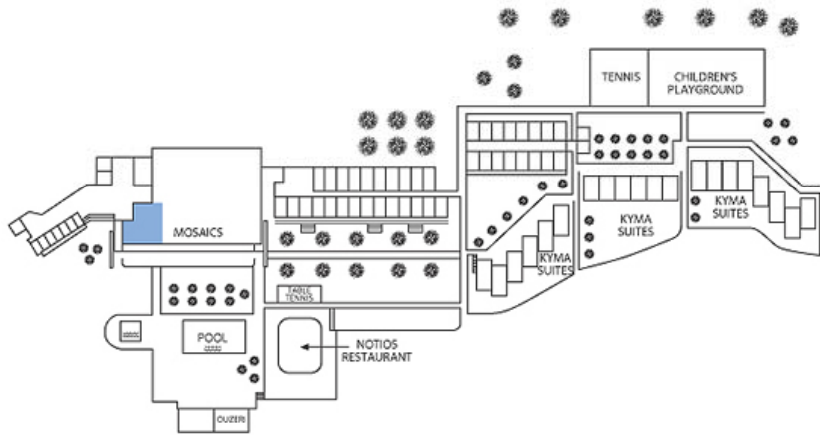
Square metres: 184 m²
Ceiling Height: 4 m

Capacities (no. of persons):

Classroom Style: 60
Theatre Style: 145
U Shape: 60
Cocktail: 150
Banquet: 90
Boardroom: 90



Total area including Mosaics Room: 557 m²



SEA

MOSAICS TERRACE

Coffee break location overlooking the main pool and sea beyond.

ALMYRA



THANOS HOTELS
ANASSA . ALMYRA . ANNABELLE

